



TECHNICAL SPECIFICATION – February 2018

AUDITORIUM

The main performance space seats 104, on a raked seating rack.

2 Extra rows of seating are available on occasions but please check this in advance as they reduce the playing space.

STAGE

The stage has a wooden light varnished floor. There are 2 dip traps on stage SR+SL which have facility panels with various patch outlets.

Dimensions of performance area:

5.6m width plus a 1.2m wing area SL +SR.

6m playing depth from rear black curtain.

There is a tab track that runs on all 3 sides of the playing area. An additional tab track further on stage can be used to create the wing spaces.

Please note there is no crossover behind the rear black tab.

There is a house baby grand piano that cannot be removed from the stage. It can be located to 2 areas on stage, SL wing or USR in corner of the stage, or used for the performance onstage.

The Load In door is very small, 1.75m high by 0.85m wide. (Please see picture on page #7)

Dressing Room

There is 1 dressing room located behind the stage on SL. It has en-suite toilet. There are two doors to get to the stage.

There is a show relay system in the dressing room.

PARKING

You can park on site in the Arts Centre Car Park. Please note there is limited space particularly for larger vans and there are some busy periods depending on what else is going on in the Arts centre.

EQUIPMENT SPECIFICATION

The onstage LX Bars are 3.2m from stage height.

Please see the Lighting Plan for Lighting Bar positions. Note FOH 2 is the Best Bar for House FOH cover, rigged there are 8 S4 Juniors giving an open white FOH cover.

LIGHTING

Please see the below list of lanterns:

20x Selecon Acclaim 500w Fresnel all with Barndoors

16x ETC Source 4 Junior 25/50 Profile

9x Parcan 64 (CP62)

Cable and Accessories

Various 15A and 13A TRS in lengths of 3,5 and 10 metres

2x 2 way 15A Grelcos

7x Gobo Holder (M Size)

4x Source 4 Junior Iris

Only a few lengths of short 5 pin DMX

Control

Zero88 Jester 24/48 Desk

36 ways of Dimming via Zero88 Betapack with a hard patch system (2K limit per Channel)

House Lights are a pair of Fresnels usually on channel 24 but this can be changed.

Either side of stage are 13amp and 15amp sockets. 15A can be used as independents for any non-dimmable fixtures.

There is a 5 pin DMX splitter which can send signal to all the LX bars on stage and FOH as well as SL+SR at stage level.

SOUND

The house sound system is Turbosound FOH with JBL Side Infill's. Output is around 4K.

There are sound patches for speakon and 3 Pin XLR both SL +SR linked to the control area at the rear of the auditorium.

Equipment

3x Turbosound 12" Left/Right/Centre (Permanently rigged on LX1)

2x Turbosound 15" Subs (On Stage level)

4x JBL Side Infill's (Permanently installed FOH L+R)

2 x JBL JX100 Passive Monitors

All the above running on Mc2 Amps

2 x Behringer Powered monitors

Control

1x Soundcraft LX7 mrk2 16 Channel desk (4way monitor mix, with 3.5mm mini jack input available for a laptop)

1x DBX 1231 Graphic Equaliser

1x TC Electronic M350 Reverb/delay unit

1x Denon CD Player

Other Sound equipment

1x Sennheiser G2 EW100 Handheld Radio Microphone

1x Sennheiser G2 EW100 Lapel Radio Microphone and transmitter

1x Sennheiser G2 EW100 Lecturn Radio microphone

1x Omnidirectional Radio mic headset

5x Shure SM58

5x Shure SM57

2x AKG D870

6x DI Box

7x Standard mic stands

3x Short mic stands

Various 3pin XLR Microphone Cable in lengths of 3,7 and 10 metres

Various different types of adaptor cable

3x Speakon couplers

AV

There is a BNC video patch system in the venue.

Equipment

1x Sanyo WXGA Projector (Fixed to project onto rear screen, cannot be moved)

1x Sony Blu-ray Player

1x Marantz Standard DVD Player

1x Video input switcher

Various Lengths of VGA cable

Various different types of adaptor

Other Information

We can source other equipment as needed, please let us know prior to your arrival and we can give you a cost for the additional hire.

Email: technician@poundarts.org.uk for any other questions. Or call Sam Smith on 01249 712618

Auditorium Photographs

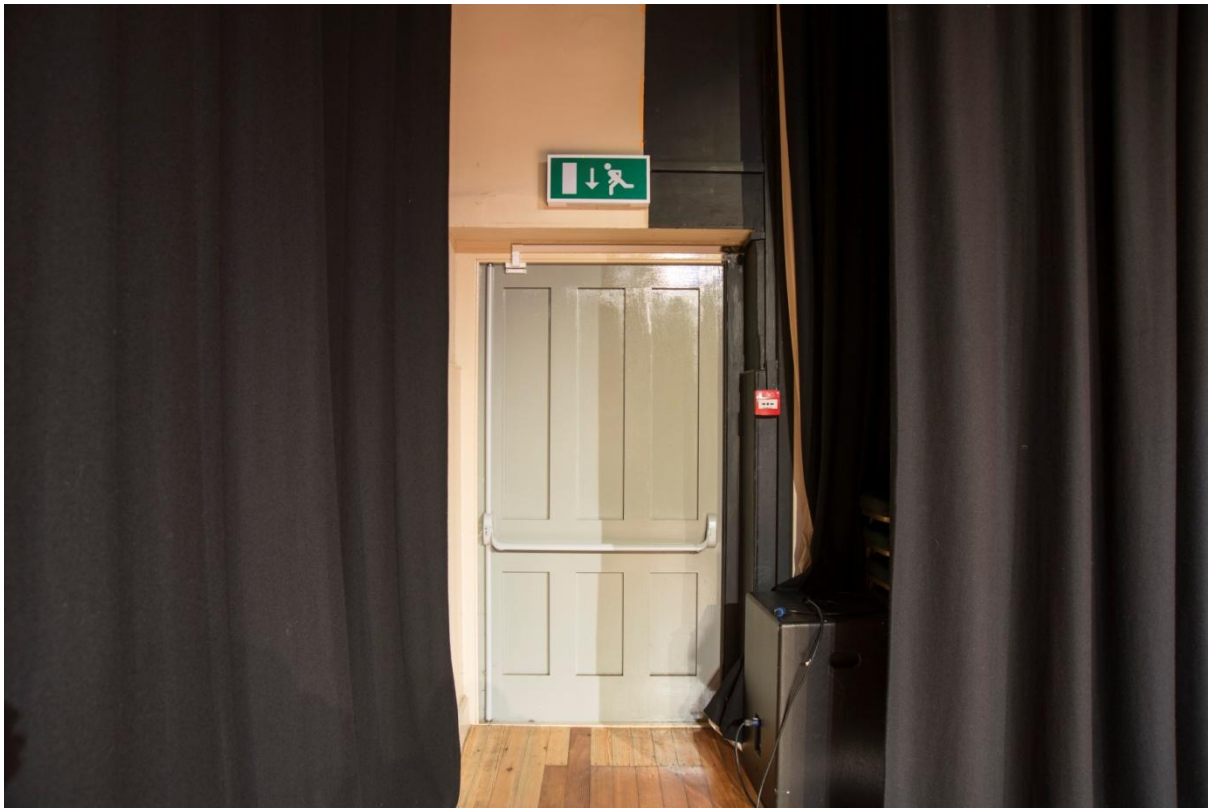
Views of the stage from FOH



Views of the auditorium from the stage



View of the loading door (1.75mx0.85m)



View of the dressing room

